

# Risk Analysis: Evaluating Threats for Robust Data Security

## A Pivotal Component of Sotero's Data Security Posture Management (DSPM+) Solution

Sotero's risk analysis is a comprehensive process that evaluates potential vulnerabilities in an organization's data security framework. It leverages advanced machine learning (ML) algorithms and data analytics to evaluate each data access request, providing real-time insights into your data security.

### Real-Time Analysis

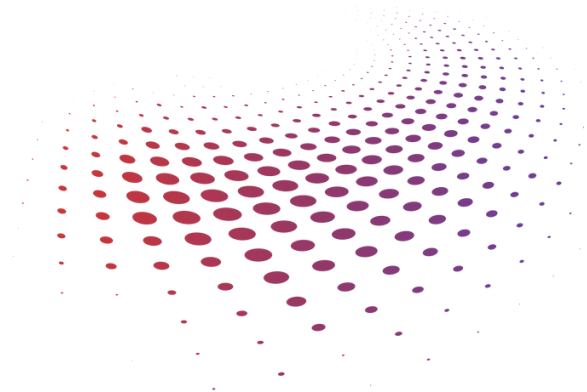
Every transaction submitted for execution is inspected, logged, and parsed into separate components. These components are evaluated in the context of historical data use. Each attribute of the transaction is assigned an anomaly score, and a combined threat score is computed using weighted scores for all attributes in the transaction.

### Threat Scoring and Decision Engine

The threat score is used to categorize transactions based on score ranges. These ranges are utilized to decide on the execution of the transaction, execution with a notification, or quarantining the transaction for further review and approval or disapproval. All decisions are logged.

### In-Use Encryption APIs

The transaction review, scoring, and decision engine is a major component of Sotero's in-use encryption APIs. The logging and scoring framework works seamlessly in conjunction with the translation and encryption/decryption APIs with an autonomous service and asynchronous function.



# Management Console

The accompanying management console provides both administrative functions and serves as a repository of database activity that can be filtered by database, file storage, or application, including multi-tenant scenarios. It includes information such as:

- Total transactions
- Transactions by threat score range
- Flagged transactions
- Quarantined transactions

Administrators can review transactions from within the management console to either review or decline them.

## Benefits

- Each transaction adds to the history of learnings that will be used to analyze the next set of transactions.
- Sotero can be used across multiple datasets or file stores, allowing you to build threat detection learnings across data sources.

## About Sotero

Sotero is a cutting-edge data security company that is revolutionizing the way organizations protect their most valuable assets - their data. Sotero delivers value beyond DSPM, it puts organizations in control beyond posture management by automatically stopping any threats or malicious activity in its tracks. With Sotero, you can unlock innovation and seize a competitive edge without compromising regulatory compliance. To learn more, visit [www.soterofsoft.com](http://www.soterofsoft.com).

